



Rafiki

WINTER 2023





CLIMBERS TO CLIMBERS

Rafiki is a brand whose story had begun long before it even got its name, and the first T-shirt was made. Still, it was always with us back then – when we were getting pumped on long rock lines, while projecting the routes on difficult bouldering sequences, on a wobbly slackline, and when sitting by the fire with a bunch of friends in the evenings.

Rafiki's brand philosophy is like climbing a rock route, for which everyone must choose their own, unique way to approach it.

R A F I K I C L I M B I N G

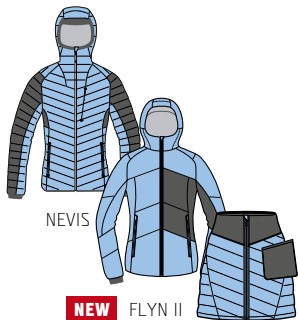
INSULATION LAYER

DUCK DOWN

DuPont SORONA



MORENA



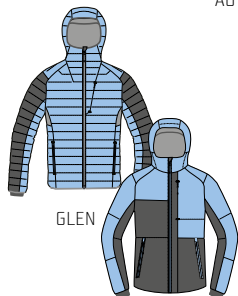
NEVIS

NEW FLYN II

AUTANA



FUEGO



GLEN

NEW FITZ



NEW

KARUN

MIDDLE LAYER

POLARSTRETCH
GRID

POLARSTRETCH
LOFT

COTTON JERSEY

COTTON PLAID
TWILL



NEW

LINYA



TARIFA



MANDALA



NEW

MOJARRA



NEW

ASCENT



HULK



PANTERA



VIRAGE

WOMEN

MEN

UNI

T-SHIRT

SORONA AGILE



VIPERA



PITONE

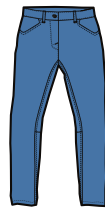
PANTS

CLIMBING
DENIM



CERRO

CLIMBING
DENIM



NEW ASIS

HYBRID COTTON/
CORD



LEGE

COTTON TWILL

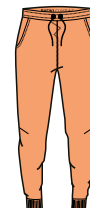


NEW SIERRA



NEW ROCKLAND

COTTON JERSEY



BADAMI



DURGA



WOMEN'S COLLECTION

ASIS	32-33
AUTANA	16-17
BADAMI	36-37
CERRO	30-31
FLYNN II	14-15
LINYA	20-21
MANDALA	24-25
MOJARRA	26-27
MORENA	10-11
NEVIS	12-13
SIERRA	34-35
TARIFA	22-23
VIPERA	28-29

MEN'S COLLECTION

ARAN	60-61
ASCENT	48-49
DURGA	66-67
FITZ	44-45
FUEGO	40-41
GLEN	42-43
HULK	50-51
LEDGE	62-63
PANTERA	52-53
PITONE	56-57
ROCKLAND	64-65
TORRE	58-59
VIRAGE	54-55

UNI COLLECTION

KARUN	18-19
KARUN	46-47



ACCESSORIES

BISHOP	72
CAMP	76
HAULER 50	69
MAGNESIUM	74
ROPER	70
SCOOP	71

PROMOTION

BANNER	77
BOW FLAG	77
CUBE	78
HANGERS	80
LOGO STAND	78
NALGENE	80
STICKERS	80



RAFIKI
Climbing

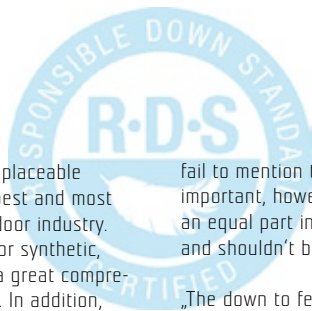


RAFIKI WOMEN



LEONIDIO, GREECE

RAFIKI DOWN JACKETS



Why down?

The certified down we use is an irreplaceable natural material that is one of the best and most effective insulation used in the outdoor industry. No other material, whether natural or synthetic, used to insulate clothing has such a great compressibility and warmth to weight ratio. In addition, down products are extremely soft and comfortable and its durability is also unique and often overlooked. Compared to synthetic insulation, down is at least twice as durable in terms of lifespan.

Fill power, weight and down to feather ratio

Fill Power is a measure of volume or the loft of a down product, which is essentially the quality of the down. In general, the better the quality of the down, the fluffier it is and the higher loft it has. The unit of fill power is 1 CUIN (Cubic Inch³). The American and European standards are the most common of which the European one is stricter. So we can say that 650 CUIN according to the European standard that we use corresponds to approximately 700 CUIN according to the American standard.

While fill power is a measure of volume, fill weight is a measure of weight. Fill Power effectively measures the quality and fill weight indicates the quantity. While many outerwear brands proudly draw attention to their high fill power, they often

fail to mention the fill weight. This is extremely important, however, as down weight also plays an equal part in determining the product's warmth and shouldn't be overlooked by consumers.

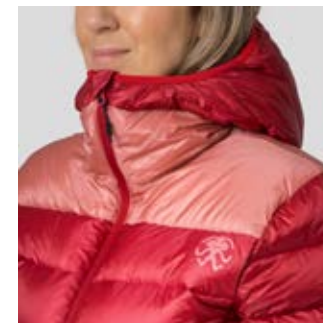
„The down to feather ratio calculates the percentage of down to the percentage of feathers in the product. In Rafiki case, it is a 90/10 ratio for down jackets. „The first number represents the percentage of down, and the second number represents the percentage of feathers. Generally speaking, a higher first number means a higher quality (and more expensive) product.“

DWR

When wet, natural down loses some of its insulating properties. Thus we treat the outer material of Rafiki down products with a DWR finish, which ensures that the down is protected against light rain and increased humidity.

Down Standard

All Rafiki down products use RDS certified down. Such down always come from producers who respect the humane treatment of ducks and geese. This certification was developed with the input of responsible farmers and animal welfare experts.



This women's Rafiki climbing down jacket is a must-have for any climbing backpack. It is definitely the warmest jacket from the Rafiki collection. It'll make you feel good and cosy and warm you up, both when belaying a fellow climber in autumn's freezing wind and during winter outdoor bouldering when temperatures drop below freezing. It features high quality certified duck down insulation with CUIN 650 fill power (90/10). The Morena jacket is made of a lightweight windproof rip-stop material with a DWR treatment for improved water resistance. The two-way zip is ideal for easy belaying. The spacious front pockets are higher up and you can easily access them even when sitting in a harness. On cold days, you will appreciate the cosy microfleece inside the pockets for increased thermal comfort. The jacket has anatomically shaped sleeves, an inner pocket for small items, mesh pockets for climbing shoes, a stuff sack that it can be packed into, and the popular climbing grades chart inside. With a weight under half a kilo (size 36), you don't have to worry it would be too heavy for your backpack. So where will you go next?

MORENA

WOMEN'S HIGH LOFT DOWN JACKET

PRODUCT VIDEO
click or scan



DESCRIPTION	INFO	FEATURES	PURPOSE
-------------	------	----------	---------

shell:

- 100% polyamide rip-stop + DWR
- downproof

filling:

- Duck Down
- fill power 650 cuin
- feather ration 90/10
- RDS Certified



- lightweight
- insulated
- water-repelent
- wind-resistant

fit: regular

size: 34-42

size 36:

- weight: 495 g
- back length: 70 cm

- 2-way main zipper with internal full length windproof flap
- 2 zipped main pockets with microfleece
- inner chest zipper pocket
- YKK zippers
- inner mesh pockets
- hood self adjustment
- elastic sleeve hems
- inner microfleece neck panel
- lycra forehead cuff
- low hem drawstring adjustment
- compression bag

- climbing
- bouldering
- multisport
- lifestyle



Lizard/raven
10025528RFX



Chrysanthemum/chili
10025526RFX



Chrysanthemum/insignia
10025527RFX





LEONIDIO, GREECE

This technical, sporty, snug Rafiki insulating jacket is perfect for climbing trips year-round, whether you're belaying a fellow climber, taking in at a belay station, chatting with friends about your next climbing plans or heading out to the rocks in winter. The jacket is insulated with Du Pont Sorona filling, which is an eco-friendly corn fibre that has great insulating and functional properties. Honestly, you won't feel much of a difference between Sorona and down in terms of insulating properties, plus this insulation resists moisture and dries quickly, so you don't have to worry

when you get wet a little. Thanks to the underarm stretch gussets, you'll feel comfortable in this jacket even during a high-intensity activity. The jacket has a stuff sack that it can be packed into, and the popular climbing grades chart inside. So, have you ever worn „a corn jacket“ before?



NEVIS

WOMEN'S INSULATED JACKET

PRODUCT VIDEO
click or scan



DESCRIPTION

- shell:
- 100% nylon rip-stop + DWR
 - 88% polyester + 12% elastane



- filling:
- 100% polyester
 - insulated
 - water-repellent
 - wind-resistant

INFO

- fit: straight
size: 34-42
- size 36:
• weight: 550 g
• back length: 66 cm

FEATURES

- 2-way main zipper with internal full length windproof flap
- polarstretch underarm parts
- 2 zipped main pockets
- zipped chest pocket
- YKK zippers
- fixed hood with elastic binding and regulation
- low hem and cuffs with elastic binding
- ergonomic shaped sleeves
- inner mesh pockets
- lycra forehead cuff
- compression bag

PURPOSE

- climbing
- bouldering
- multisport
- lifestyle



NEW COLOUR

Tapestry/nights
10036347RFX

Chrysanthemum/chili
10025535RFX

NEW COLOUR

Cadet/nights
10036348RFX





LOUČOVICE, CZECHIA

This women's climbing insulated jacket with an asymmetric pattern is really lightweight and anatomically shaped and you'll love it for autumn and winter rock climbing trips. It features the proven and environmentally sustainable DuPont Sorona insulation filling, which has a minimum of 30% natural content (corn husk) and is also energy friendly to produce. The outer rip-stop material has a DWR treatment. The jacket has YKK zips, lycra cuffs, mesh pockets for climbing shoes, a drawcord adjustable hood,

zip chest pocket, climbing grades chart and transport case. It is simply a jacket you'll love and won't want to take off.



FLYNN II

NEW

WOMEN'S LIGHTWEIGHT COMPACT INSULATED JACKET

DESCRIPTION	INFO	FEATURES	PURPOSE
<p>shell:</p> <ul style="list-style-type: none">• 100% nylon rip-stop+ DWR <p>filling:</p> <ul style="list-style-type: none">• 100% polyester <ul style="list-style-type: none">• water-repellent• wind-resistant• insulated	<p>fit: straight</p> <p>size: 34-42</p> <p>size 36:</p> <ul style="list-style-type: none">• weight: 400 g• back length: 65 cm	<ul style="list-style-type: none">• 2-way main zipper with internal full length windproof flap• 2 zippered main pockets• YKK zippers• fixed hood with regulation• low hem with regulation• sleeve cuffs with elastic binding• ergonomic shaped sleeves• forehead lycra cuff	<p>climbing</p> <p>bouldering</p> <p>multisport</p> <p>lifestyle</p>



Cress green
10036349RFX

Cadet/nights
10036350RFX

Tapestry/nights
10036351RFX

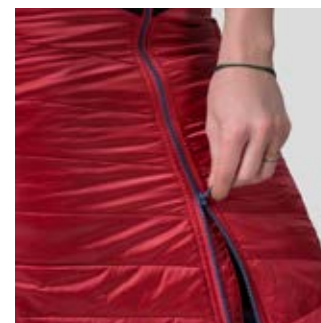
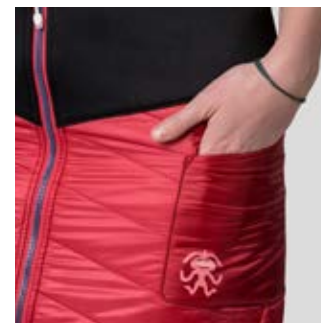
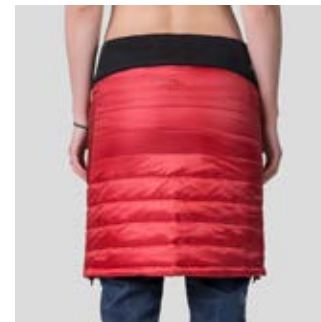




LOUČOVICE, CZECHIA

Getting properly dressed for autumn and winter climbing from the waist up is not such a problem, but every climber who has ever belayed her partner in winter knows that keeping her legs warm is not easy. And here comes the Autana insulated skirt. At Rafiki, we have put our heads together and made a climbing skirt that features Du Pont Sorona, an eco-friendly insulation fill made of corn fiber. It insulates well, dries quickly and is friendly to the environment. This skirt has a wide and elasticated

powerstretch waist band. This makes it really comfortable even during more sporting activities. The front zip is two-way, so bealying is not a problem. The Autana is made of a lightweight windproof rip-stop material with a DWR treatment for better water resistance. So have you ever worn a stylish „corn skirt“ when rock climbing or bouldering?



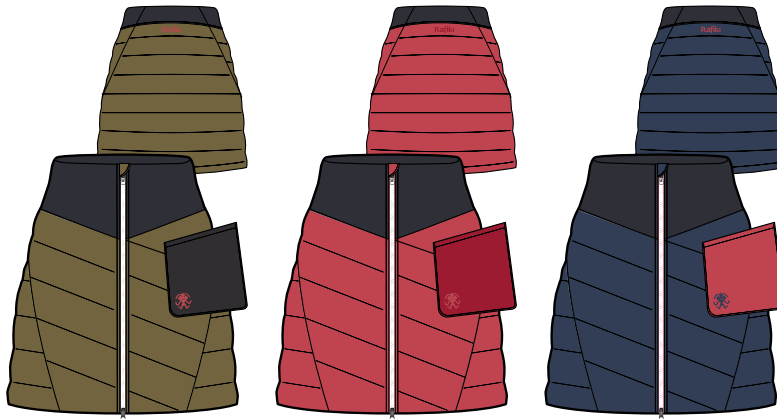
AUTANA

WOMEN'S LIGHTWEIGHT INSULATED SKIRT



PRODUCT VIDEO
click or scan

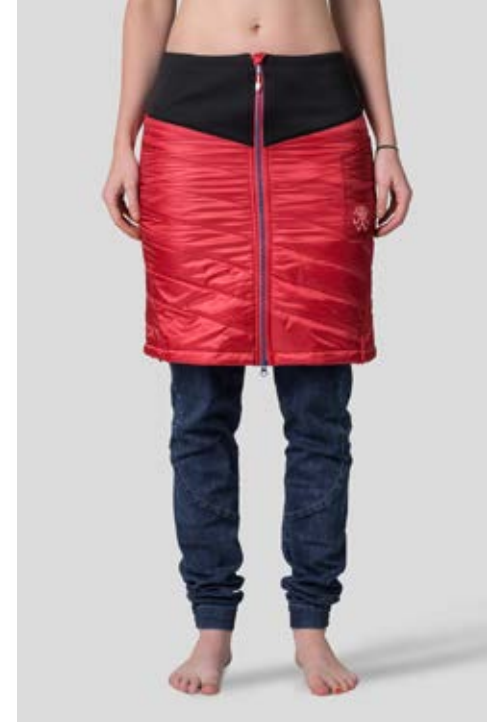
DESCRIPTION	INFO	FEATURES	PURPOSE
<p>shell:</p> <ul style="list-style-type: none"> • 100% nylon rip-stop + DWR • 88% polyester + 12% elastane <p>filling:</p> <ul style="list-style-type: none"> • 100% polyester <ul style="list-style-type: none"> • lightweight • insulated 	<p>fit: regular size: 34-42</p> <p>size 36: • weight: 175 g • side seam: 54 cm</p>	<ul style="list-style-type: none"> • 2-way main zipper with internal full length windproof flap • YKK zippers • insulated patched pocket • polarstretch wide waistband • low hem drawstring adjustment 	<p>climbing <input type="checkbox"/></p> <p>bouldering <input type="checkbox"/></p> <p>multisport <input type="checkbox"/></p> <p>lifestyle <input type="checkbox"/></p>



Lizard/raven
10025531RFX

Chrysanthemum/chili
10025529RFX

Insignia/chili
10025530RFX





HAVRANKA, CZECHIA

An insulated flannel shirt which looks good and serves great as an autumn jacket. Rafiki clothing is definitely not boring. Our designers really went all out with this one and combined two successful styles - a furry sweatshirt and a flannel shirt - into one product. The result is a jacket you can't buy anywhere else.



KARUN

NEW

UNI MIDWEIGHT INSULATED FLANNEL JACKET

DESCRIPTION

shell:

- 100% cotton (yarn-dyed plaid twill)
- 100% polyester (lining)

- insulated

INFO

fit: regular

size: XS-XXL

size M:

- weight: 700 g
- back length: 74 cm

FEATURES

- hand pockets
- chest pockets with single button flap closure
- central button opening
- lined body and sleeves

PURPOSE

climbing



bouldering



multisport

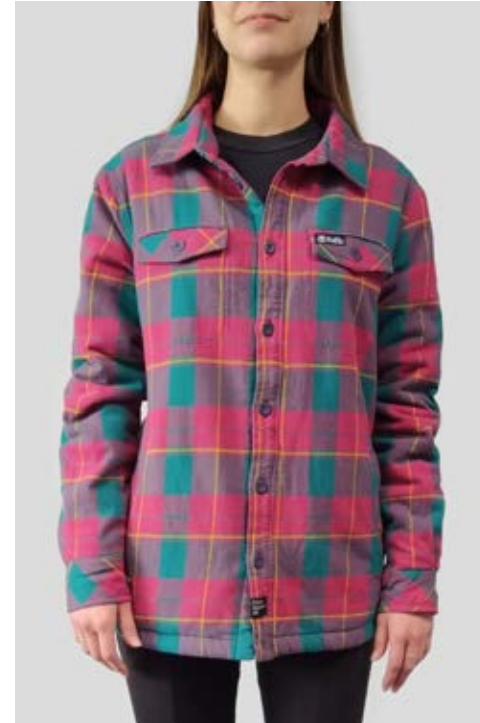


lifestyle



Jalapeno plaid
10036380RFX

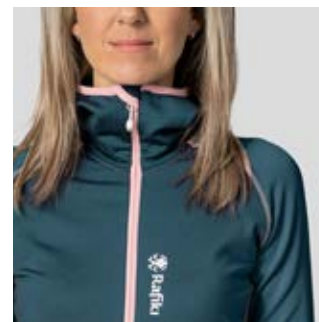
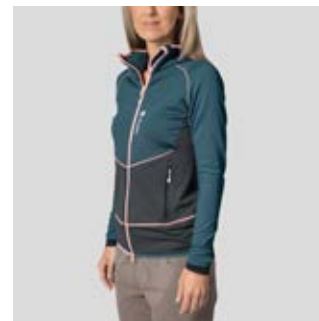
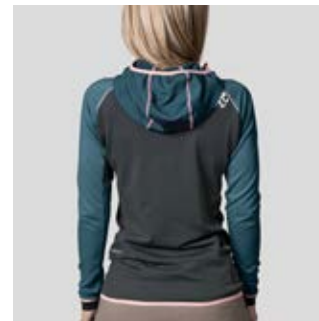
Pirate plaid
10036381RFX





TICINO, SWITZERLAND

This colourful and lightweight women's technical sweatshirt with a hood is made of Polar Stretch Grid, a comfortable and stretch material. Its system of grooves going through the solid part of the material makes this sweatshirt moisture-wicking and breathable. It has a two-way zip, sophisticated fit that does not restrict movement and two main pockets. It is a popular sweatshirt, which is a classic in our offer and which is even worn by the Czech sport climbing national team members.



LINYA

NEW

WOMEN'S TECHNICAL FULL-ZIP HOODY

DESCRIPTION

- 95% polyester
+ 5% spandex
(single grid polar fleece)

POLAR STRETCH
Grid

- warm
- breathable
- lightweight
- stretch
- quick dry



INFO

- fit: slim
- size: 34-42
- size 36:
 - weight: 360 g
 - back length: 63 cm

FEATURES

- 2-way main zipper
- 2 zipped main pockets
- YKK zippers
- tailored hood with elastic binding
- low hem and cuffs with elastic binding
- lycra sleeve cuffs
- comfortable fit through flat lock seams

PURPOSE

- climbing 
- bouldering 
- multisport 
- lifestyle 



Crushed violets/tapestry
10036354RFX



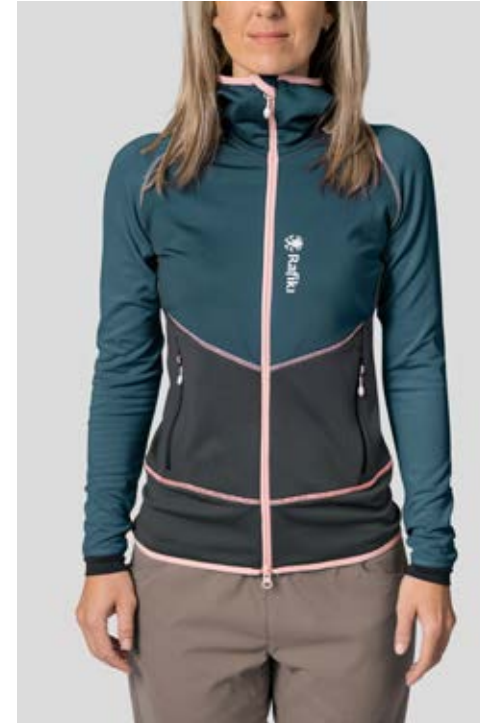
Chrysanthemum/tapestry
10036355RFX



Olive oil/chrys
10036356RFX



Tapestry/nights
10036357RFX





MALINSKÁ, CZECHIA

This is not only a great climbing area in Spain, but also a perfect sweatshirt you won't want to take off. This is a full-zip stylish 'furry' sweatshirt with a brushed fleece hood that has excellent thermal insulation properties. This sweatshirt will really keep you warm and last. So don't forget to pack it with you on a climbing trip, there's definitely room in your pack for it.



TARIFA

WOMEN'S HOODED HAIRY FLEECE JACKET



PRODUCT VIDEO
click or scan

DESCRIPTION

- 100% polyester
- 88% polyester
+ 12% Spandex

POLAR STRETCH
Loft

- warm

INFO

fit: straight
size: 34-42

size 36:

- weight: 480 g
- back length: 64 cm

FEATURES

- fixed hood with elastic binding
- 2-way main zipper
- 2 zipped main pockets
- chest zipper pocket
- YKK zippers
- low hem and sleeve
with elastic cuff

PURPOSE

climbing



bouldering



multisport



lifestyle



Insignia blue
10025546RFX

Abbey stone
10025547RFX





LOUČOVICE, CZECHIA

This is not only a legendary boulder in Bishop, USA, or an Indian geometric configuration of symbols, it's also a women's stylish extra-long hoodie that'll make everyone envy once you wear it. The sleeves have Rafiki print on them, and this hoodie has a higher collar with a drawcord and a kangaroo pocket with zips so that you don't lose your athletic tape, cell phone or other valuables. It is simply a climbing must-have in your wardrobe.



MANDALA

WOMEN'S COMFORTABLE LONG HOODY



PRODUCT VIDEO
click or scan

DESCRIPTION

- 70% polyester
+ 26% cotton
+ 4% elastane
- breathable
- durable

INFO

- fit: regular
size: 34-42
- size 36:
• weight: 635 g
• back length: 77 cm

FEATURES

- fixed hood with regulation
- kangaroo pocket with zipper opening
- sleeve hem with elastic binding
- ribbed bottom hem
- long size

PURPOSE

- climbing
- bouldering
- multisport
- lifestyle



NEW COLOUR
Brindle/raven
10036358RFX

NEW COLOUR
Raven
10036359RFX

NEW COLOUR
Raven/tapestry
10036360RFX





LOUČOVICE, CZECHIA

Trust us, it's not just sandstone rock climbers who wear shirts for climbing. This flannel climbing shirt is also great as a second layer instead of a sweatshirt. For this purpose, it has two side pockets and, as usually shirts do, two chest pockets with a flap. Small gussets are inserted in the armpit areas for better range of motion and maximum freedom of movement. The sleeve cuffs can be set in two positions.



MOJARRA

NEW

WOMEN'S MIDWEIGHT FLANNEL SHIRT

DESCRIPTION	INFO	FEATURES	PURPOSE
<ul style="list-style-type: none">• 100% cotton (yarn-dyed plaid twill)• breathable	<p>fit: regular size: 34-42</p> <p>size 36: • weight: 365 g • back length: 72 cm</p>	<ul style="list-style-type: none">• hand pockets• chest pockets with single button flap closure• sleeve opening and regulation	<p>climbing ■■■■■■■■■■</p> <p>bouldering ■■■■■■■■■■</p> <p>multisport ■■■■■■■■■■</p> <p>lifestyle ■■■■■■■■■■</p>



Jalapeno plaid
10036361RFX

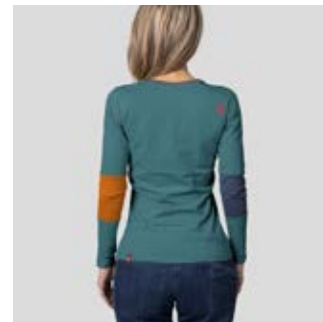
Pirate plaid
10036362RFX





LOUČOVICE, CZECHIA

A T-shirt made of corn? Why not! Vipera is a long-sleeved climbing T-shirt made of Du-Pont Sorona, an eco-friendly corn fibre that we have used to replace elastane. This T-shirt stands out with its attractive colourful sleeves, round neck, and high stretch material. Definitely a T-shirt that is great for a warm-up and outdoor climbing. So, pack it for the rocks!



VIPERA

WOMEN'S LONG-SLEEVE T-SHIRT



PRODUCT VIDEO
click or scan

DESCRIPTION

- 64% rayon
+ 36% Sorona
(DuPont corn fiber)



- breathable
- stretch
- silicone wash

INFO

fit: straight
size: 34-42

size 36:
• weight: 115 g
• back length: 61 cm

FEATURES

- wide round neckline
- sleeves with dividing seams
- front print

PURPOSE



NEW COLOUR
Brittany blue
10036364RFX

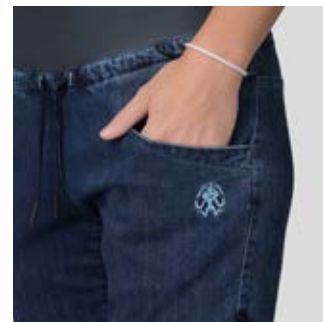
NEW COLOUR
Olive oil
10036365RFX





LEONIDIO, GREECE

You'll love these women's climbing jeans overtrousers with an elastic waist. They're great for climbing in cold weather, but you'll also look great in them when going to the wall, at work, or wandering around town. We've gone to great lengths to make sure the denim is perfect. The Cerro jeans also feature distinctive pockets, and the bottom hem of the leg is elasticated, making it easy to put the jeans on, even if you're wearing for example climbing shoes. So, are you ready to climb?



CERRO

WOMEN'S CLIMBING DENIM PANTS



PRODUCT VIDEO
click or scan

DESCRIPTION

- 55% cotton + 23% rayon
+ 20% polyester
+ 2% spandex
- 88% polyester
+ 12% elastane
(waistband cuff)
- comfortable
- stretch
- durable



Dark blue denim
10025555RFX

INFO

- fit: straight
size: 34-42
- size 36:
• weight: 480 g
• inseam: 79 cm

FEATURES

- wide elastic waistband
with internal drawcord
- hand pockets
- rear pocket
- gusset for freedom of
movement
- ergonomic pre-shaped knees
- toothbrush loops
- bottom leg back part elastic

PURPOSE

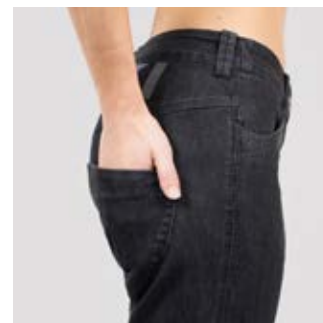
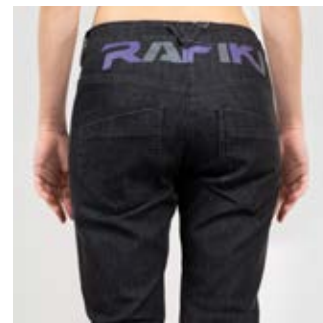
- climbing
████████████████████
- bouldering
████████████████████
- multisport
██████████████████
- lifestyle
██████████████████





LOUČOVICE, CZECHIA

Women's tapered climbing jeans in a classic cut and a more informal look. The attractive and stylish Rafiki print at the back catches your eye at first glance. Just because you're wearing jeans doesn't mean you can't go climbing. They have pre-shaped knees and a climbing-friendly seat and are made of a stretchy material. This is simply a great looking and functional pair of jeans that you definitely need in your climbing wardrobe.



WOMEN'S DENIM PANTS

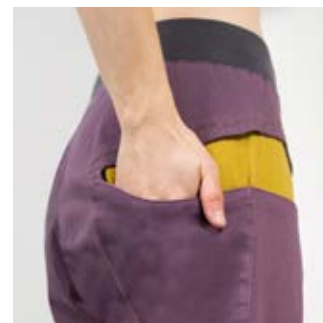
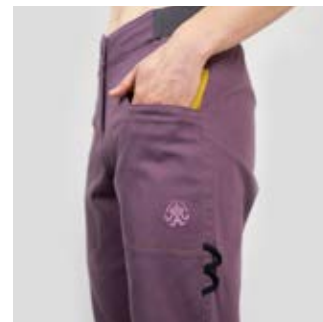
DESCRIPTION	INFO	FEATURES	PURPOSE
<p>Dark Blue Denim: 28% cotton + 52% rayon + 19% polyester + 1% spandex</p> <p>Black Denim: • 67% cotton + 29% polyester + 3% rayon + 1% spandex</p> <ul style="list-style-type: none"> • comfortable • stretch • durable 	<p>fit: straight size: 34-42</p> <p>size 36: • weight: 440 g • inseam: 79 cm</p>	<ul style="list-style-type: none"> • hand pockets • rear pockets • gusset for freedom of movement • ergonomic pre shaped knees • waistbelt loops • fly opening • YKK zipper • waist drawstring adjustment 	<p>climbing ██████████</p> <p>bouldering ██████████</p> <p>multisport ██████████</p> <p>lifestyle ██████████</p>
 <p>Dark blue denim 10036366RFX</p>	 <p>Black denim 10036367RFX</p>		





BOR, CZECHIA

These cotton climbing trousers are made of a comfortable twill material. They are suitable for outdoor autumn climbing, going to the wall and for work. Elasticated cuffs in the waist and legs ensure a more comfortable fit and pleasant climbing experience. At first glance, you'll be struck by the distinctive pocket entries. It is simply a pair of trousers tuned down to the smallest detail. So where will you take them next? Chulilla, Fontainebleau or maybe Finale?



SIERRA

NEW

WOMEN'S PERFORMANCE CLIMBING PANTS

DESCRIPTION

- 98% cotton + 2% spandex
- 95% cotton + 5% spandex (waistband cuff)
- durable
- stretch

INFO

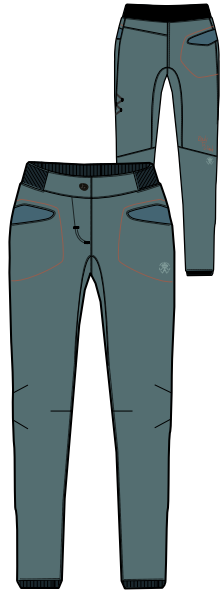
- fit: straight
size: 34-42
- size 36:
• weight: 460 g
• inseam: 77 cm

FEATURES

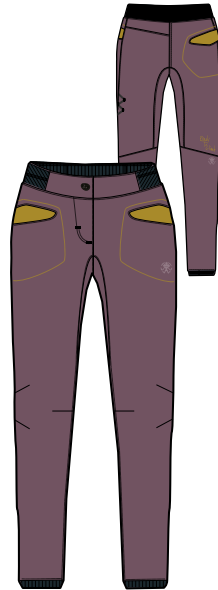
- adjustable partly elastic waistband
- 2 front pockets
- rear pocket
- gusset for freedom of movement
- ergonomic pre shaped knees
- low leg rib cuffs
- toothbrush loops
- YKK zipper

PURPOSE

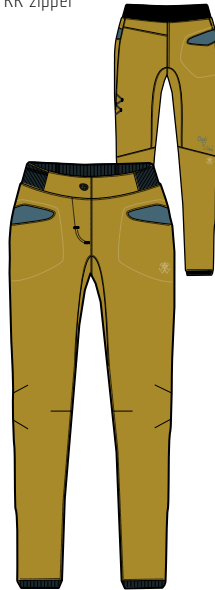
- climbing 
- bouldering 
- multisport 
- lifestyle 



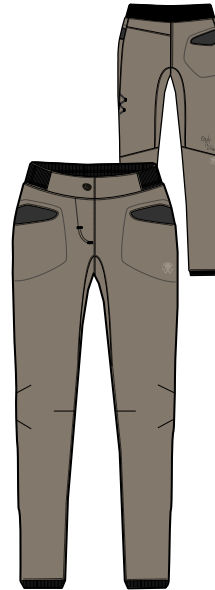
North atlantic
10036368RFX



Plum wine
10036369RFX



Olive oil
10036370RFX



Brindle
10036371RFX





LOUČOVICE, CZECHIA

Stylish women's climbing sweatpants! You just need to have these in your wardrobe. We've narrowed the legs and finished them with cuffs so you can see every step, won't step on them, and can climb well in your climbing shoes. You can use the Badami both for outdoor bouldering and during evening sessions with friends. Remember, Rafiki sweatpants are not only for chilling out, but also for climbing! So don't just sit at home - you know what to do...



BADAMI

WOMEN'S BASIC SWEAT PANTS



PRODUCT VIDEO
click or scan

DESCRIPTION

- 70% polyester
+ 26% cotton
+ 4% elastane
- breathable
- durable

INFO

- fit: straight
size: 34-42
- size 36:
• weight: 480 g
• inseam: 78 cm

FEATURES

- elastic waistband
- waist internal drawcord
- hand pockets
- patched rear pocket
- low leg rib cuffs

PURPOSE

- climbing
- bouldering
- multisport
- lifestyle



Raven
10025562RFX

Sagebrush
10025563RFX





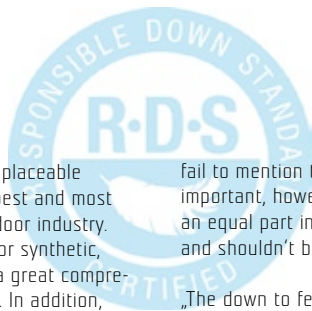
A large, stylized dragon logo in a light blue color, positioned behind the text on the left side of the image. The dragon is depicted in a dynamic, coiled pose.

RAFIKI MEN



BECHYNĚ CAVE, CZECHIA

RAFIKI DOWN JACKETS



Why down?

The certified down we use is an irreplaceable natural material that is one of the best and most effective insulation used in the outdoor industry. No other material, whether natural or synthetic, used to insulate clothing has such a great compressibility and warmth to weight ratio. In addition, down products are extremely soft and comfortable and its durability is also unique and often overlooked. Compared to synthetic insulation, down is at least twice as durable in terms of lifespan.

Fill power, weight and down to feather ratio

Fill Power is a measure of volume or the loft of a down product, which is essentially the quality of the down. In general, the better the quality of the down, the fluffier it is and the higher loft it has. The unit of fill power is 1 CUIN (Cubic Inch³). The American and European standards are the most common of which the European one is stricter. So we can say that 650 CUIN according to the European standard that we use corresponds to approximately 700 CUIN according to the American standard.

While fill power is a measure of volume, fill weight is a measure of weight. Fill Power effectively measures the quality and fill weight indicates the quantity. While many outerwear brands proudly draw attention to their high fill power, they often

fail to mention the fill weight. This is extremely important, however, as down weight also plays an equal part in determining the product's warmth and shouldn't be overlooked by consumers.

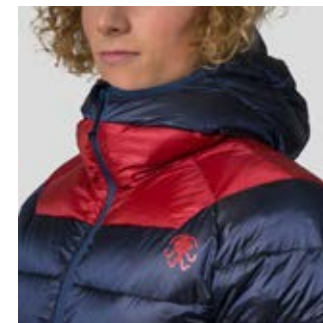
„The down to feather ratio calculates the percentage of down to the percentage of feathers in the product. In Rafiki case, it is a 90/10 ratio for down jackets. „The first number represents the percentage of down, and the second number represents the percentage of feathers. Generally speaking, a higher first number means a higher quality (and more expensive) product.“

DWR

When wet, natural down loses some of its insulating properties. Thus we treat the outer material of Rafiki down products with a DWR finish, which ensures that the down is protected against light rain and increased humidity.

Down Standard

All Rafiki down products use RDS certified down. Such down always come from producers who respect the humane treatment of ducks and geese. This certification was developed with the input of responsible farmers and animal welfare experts.



This men's Rafiki climbing down jacket is a must-have for any climbing backpack. It is definitely the warmest jacket from the Rafiki collection. It'll make you feel good and cosy and warm you up, both when belaying a fellow climber in autumn's freezing wind and during winter outdoor bouldering when temperatures drop below freezing. It features high quality certified duck down insulation with CUIN 650 fill power (90/10). The Fuego jacket is made of a lightweight windproof rip-stop material with a DWR treatment for improved water resistance. The two-way zip is ideal for easy belaying. The spacious front pockets are higher up and you can easily access them even when sitting in a harness. On cold days, you will appreciate the cosy microfleece inside the pockets for increased thermal comfort. The jacket has anatomically shaped sleeves, an inner pocket for small items, mesh pockets for climbing shoes, a stuff sack that it can be packed into, and the popular climbing grades chart inside. With a weight under half a kilo (M size), you don't have to worry it would be too heavy for your backpack. So where will you go next?

FUEGO

MEN'S HIGH LOFT DOWN JACKET

PRODUCT VIDEO
click or scan



DESCRIPTION	INFO	FEATURES	PURPOSE
<p>shell:</p> <ul style="list-style-type: none"> • 100% polyamide rip-stop + DWR • downproof <p>filling:</p> <ul style="list-style-type: none"> • Duck Down • fill power 650 cuin • feather ration 90/10 • RDS Certified <p>  </p> <ul style="list-style-type: none"> • lightweight • insulated • water-repellent • wind-resistant 	<p>fit: regular size: S-XXL</p> <p>size M:</p> <ul style="list-style-type: none"> • weight: 515 g • back length: 74 cm 	<ul style="list-style-type: none"> • 2-way main zipper with internal full length windproof flap • 2 zipped main pockets with microfleece • inner chest zipper pocket • YKK zippers • inner mesh pockets • hood self adjustment • elastic sleeve hems • inner microfleece neck panel • lycra forehead cuff • low hem drawstring adjustment • compression bag 	<p>climbing <input type="checkbox"/></p> <p>bouldering <input type="checkbox"/></p> <p>multisport <input type="checkbox"/></p> <p>lifestyle <input type="checkbox"/></p>
			
<p>Raven 10025523RFX</p>	<p>Chili/lizard 10025524RFX</p>	<p>Insignia/chili 10025525RFX</p>	

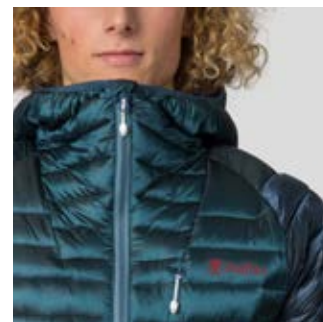
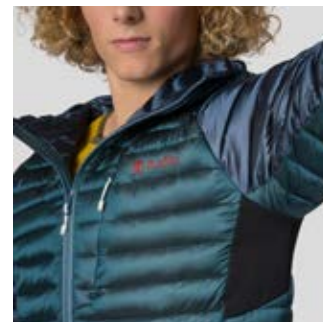




LOUČOVICE, CZECHIA

This men's sporty, snug Rafiki technical insulating jacket is perfect for climbing trips year-round, whether you're belaying a fellow climber, taking in at a belay station, chatting with friends about your next climbing plans, or heading out to the rocks in winter. The jacket is insulated with Du Pont Sorona fill, which is an eco-friendly corn fibre that has great insulating and functional properties. Honestly, you won't feel much of a difference between Sorona and down in terms of insulating properties, plus this fill resists moisture

and dries quickly, so you don't have to worry when you get wet a little. Thanks to the underarm stretch gussets, you'll feel comfortable in this jacket even during a high-intensity activity. The mesh inside the front pockets increases the thermal comfort. The jacket has a stuff sack that it can be packed into, and the popular climbing grades chart inside. So, have you ever worn „a corn jacket“ before?



GLEN

MEN'S INSULATED JACKET



PRODUCT VIDEO
click or scan

DESCRIPTION

- shell:
- 100% polyamide rip-stop + DWR
 - 88% polyester + 12% elastane



- filling:
- 100% polyester

- insulated
- water-repellent
- wind-resistant

INFO

- fit: straight
size: S-XXL
- size M:
• weight: 650 g
• back length: 73 cm

FEATURES

- 2-way main zipper with internal full length windproof flap
- polarstretch underarm parts
- 2 zipped main pockets
- zipped chest pocket
- YKK zippers
- fixed hood with elastic binding and regulation
- low hem and cuffs with elastic binding
- ergonomic shaped sleeves
- inner mesh pockets
- lycra forehead cuff
- compression bag

PURPOSE

- climbing
- bouldering
- multisport
- lifestyle



Chili/raven
10025532RFX

NEW COLOUR
Tapestry/nights
10036375RFX

NEW COLOUR
Blue nights/raven
10036376RFX





LOUČOVICE, CZECHIA

This climbing insulated jacket with an asymmetric pattern is really lightweight and anatomically shaped and you'll love it for autumn rock climbing trips. It features the proven and environmentally sustainable DuPont Sorona insulation filling, which has a minimum of 30% natural content (corn husk) and is also energy friendly to produce. The outer rip-stop material has a DWR treatment. The jacket has YKK zips, lycra cuffs, mesh pockets for climbing shoes, a drawcord

adjustable hood, zip chest pocket, climbing grades chart and transport case. It is simply a jacket you'll love and won't want to take off.



FITZ

NEW

MEN'S LIGHTWEIGHT COMPACT INSULATED JACKET

DESCRIPTION	INFO	FEATURES	PURPOSE
<p>shell:</p> <ul style="list-style-type: none">• 100% polyamide rip-stop + DWR <p>filling:</p> <ul style="list-style-type: none">• 100% polyester <ul style="list-style-type: none">• water-repellent• wind-resistant• insulated	<p>fit: straight size: S-XXL</p> <p>size M:</p> <ul style="list-style-type: none">• weight: 490 g• back length: 74 cm	<ul style="list-style-type: none">• 2-way main zipper with internal full length windproof flap• 2 zippered main pockets• zippered chest pocket• YKK zippers• fixed hood with regulation• low hem with regulation• sleeve cuffs with elastic binding• ergonomic shaped sleeves• forehead lycra cuff	<p>climbing <input type="checkbox"/></p> <p>bouldering <input type="checkbox"/></p> <p>multisport <input type="checkbox"/></p> <p>lifestyle <input type="checkbox"/></p>



Raven
10036377RFX

Cress green/raven
10036378RFX

Tapestry/nights
10036379RFX





LOUČOVICE, CZECHIA

An insulated flannel shirt which looks good and serves great as an autumn jacket. Rafiki clothing is definitely not boring. Our designers really went all out with this one and combined two successful styles - a furry sweatshirt and a flannel shirt - into one product. The result is a jacket you can't buy anywhere else.



KARUN

NEW

UNI MIDWEIGHT INSULATED FLANNEL JACKET

DESCRIPTION

shell:

- 100% cotton
(yarn-dyed plaid twill)
- 100% polyester (lining)

- insulated

INFO

fit: regular

size: XS-XXL

size M:

- weight: 700 g
- back length: 74 cm

FEATURES

- hand pockets
- chest pockets with single button flap closure
- central button opening
- lined body and sleeves

PURPOSE

climbing



bouldering



multisport



lifestyle



Jalapeno plaid
10036380RFX

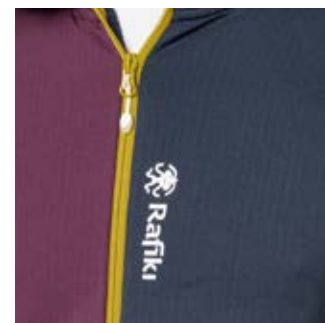
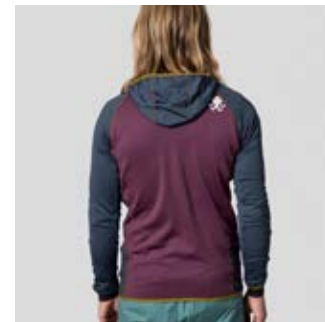
Pirate plaid
10036381RFX





LOUČOVICE, CZECHIA

This colourful and lightweight men's technical sweatshirt with a hood is made of Polar Stretch Grid, a comfortable and stretch material. Its system of grooves going through the solid part of the material makes this sweatshirt moisture-wicking and breathable. It has a two-way zip, sophisticated fit that does not restrict movement and two main pockets. It is a popular sweatshirt, which is a classic in our offer and which is even worn by the Czech sport climbing national team members.



ASCENT

NEW

MEN'S TECHNICAL FULL-ZIP HOODY

DESCRIPTION

- 95% polyester
+ 5% spandex
(single grid polar fleece)

POLAR STRETCH
Grid

- warm
- breathable
- lightweight
- stretch
- quick dry

INFO





fit: slim
size: S-XXL

size M:
• weight: 415 g
• back length: 65 cm

FEATURES

- 2-way main zipper
- 2 zipped main pockets
- YKK zippers
- tailored hood with elastic binding
- low hem and cuffs with elastic binding
- sleeve cuffs
- comfortable fit through flat lock seams

PURPOSE

climbing 
bouldering 
multisport 
lifestyle 



Blue nights/tapestry/olive
10036382RFX



Olive oil/tapestry
10036383RFX



Tapestry/nights
10036384RFX



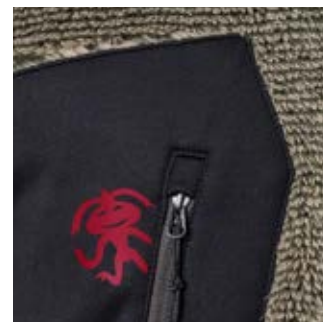
Crushed violets/nights
10036385RFX





HAVRANKA, CZECHIA

Rafiki Hulk is a perfect sweatshirt you won't want to take off. This is a men's full-zip stylish 'furry' sweatshirt with a hood made of the Polar Stretch Loft brushed fleece that has excellent thermal insulation properties. This sweatshirt will really keep you warm and last. So don't forget to pack it with you on a climbing trip, there's definitely room in your pack for it.



HULK

MEN'S HOODED HAIRY FLEECE JACKET



PRODUCT VIDEO
click or scan

DESCRIPTION

- 100% polyester
- 88% polyester
+ 12% elastane

POLAR STRETCH
Loft

- warm

INFO

fit: regular
size: S-XXL

size M:

- weight: 515 g
- back length: 69 cm

FEATURES

- fixed hood with elastic binding
- full-zipper opening
- main zipper pockets
- YKK zippers
- low chest zipper pocket
- low hem with elastic binding
- sleeve elastic cuffs

PURPOSE

climbing



bouldering



multisport



lifestyle



Insignia blue
10025544RFX

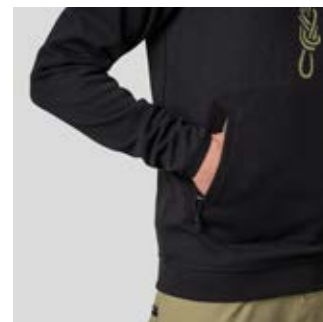
Abbey stone
10025545RFX





LOUČOVICE, CZECHIA

A men's stylish Rafiki hoodie that you'll love, whether you're a die-hard boulderer, rock climber, slackliner or sand rock climber. This sweatshirt has a practical higher collar with a drawcord and a kangaroo pocket with zips so that you don't lose your athletic tape, cell phone or other valuables. It is simply a climbing must-have in your backpack.





LOUČOVICE, CZECHIA

Virage is perfect for all climbers who like to add a touch of casual elegance to their outfit. This medium-weight flannel shirt is also great as a second layer instead of a sweatshirt. For this purpose, it has two side pockets and, as usually shirts do, two chest pockets with a flap. Small gussets are inserted in the armpit areas for better range of motion and maximum freedom of movement. Sleeves cuffs can be set in two positions.



VIRAGE

MEN'S LONG-SLEEVE MIDWEIGHT FLANNEL SHIRT

DESCRIPTION

- 100% cotton (yarn-dyed plaid twill)
- breathable

INFO

fit: regular
size: S-XXL

- size M:
- weight: 485 g
 - back length: 74 cm

FEATURES

- chest pockets with single-button flap closure
- hand pockets
- underarm inseam gusset panel
- sleeve opening and regulation

PURPOSE

- climbing
- bouldering
- multisport
- lifestyle



NEW COLOUR

Jalapeno plaid
10036388RFX

NEW COLOUR

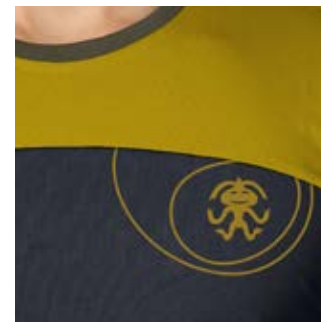
Pirate plaid
10036389RFX





LOUČOVICE, CZECHIA

A T-shirt made of corn? Why not! Pitone is a long-sleeved climbing T-shirt made of Du-Pont Sorona, an eco-friendly corn fibre that we have used to replace elastane. This T-shirt stands out with its attractive colourful sleeves, round neck, and high stretch material. Definitely a T-shirt that is great for a warm-up and outdoor climbing. So, pack it for the rocks!



PITONE

MEN'S LONG-SLEEVE T-SHIRT



PRODUCT VIDEO
click or scan

DESCRIPTION

- 64% rayon + 36% Sorona (DuPont corn fiber)



- breathable
- stretch
- silicone wash

INFO

fit: regular
size: S-XXL

size M:

- weight: 225 g
- back length: 69 cm

FEATURES

- round neckline
- sleeves with dividing seams
- front print

PURPOSE

climbing



bouldering



multisport



lifestyle



NEW COLOUR

Blue nights/olive
1003639DRFX

NEW COLOUR

Blue nights/brittany
10036391RFX

NEW COLOUR

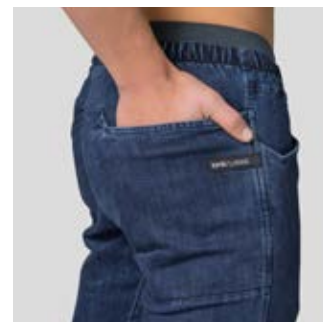
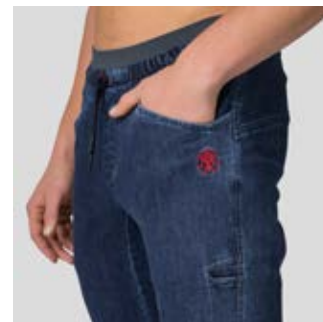
Olive/autumn/nights
10036392RFX





LEONIDIO, GREECE

You'll love these men's climbing jeans overtrousers with an elastic waist. They're great for climbing in cold weather, but you'll also look great in them when going to the wall, at work, or wandering around town. We've gone to great lengths to make sure the denim is perfect. The Torre jeans also feature distinctive pockets, and the bottom hem of the leg is elasticated, making it easy to put the jeans on, even if you're wearing for example climbing shoes.



TORRE

MEN'S CLIMBING DENIM PANTS



PRODUCT VIDEO
click or scan

DESCRIPTION

- 55% cotton + 23 % rayon
+ 20% polyester
+ 2% spandex
- 88% polyester
+ 12% elastane
(waistband cuff)
- comfortable
- stretch
- durable



Dark blue denim
10025554RFX

INFO

- fit: straight
size: S-XXL
- size M:
• weight: 520 g
• inseam: 79 cm

FEATURES

- elastic waistband with internal drawcord
- hand pockets
- rear pocket
- gusset for freedom of movement
- ergonomic pre-shaped knees
- brush pocket

PURPOSE

- climbing
■■■■■■■■■■
- bouldering
■■■■■■■■■■
- multisport
■■■■■■■■■■
- lifestyle
■■■■■■■■■■





LOUČOVICE, CZECHIA

Tapered climbing jeans in a classic „five-pocket” style that’s perfect for fall bouldering, work, and night-time fun trips after a climbing training. These jeans will catch your eye with the distinctive decoration at the back and have a drawstring in the waist, shaped knees, a gusset in the crotch or pockets for brushes. So, what climbing fun will you go on next?



ARAN

NEW

MEN'S DENIM PANTS

DESCRIPTION

- Dark Blue Denim:
- 28% cotton + 52% rayon
 - + 19% polyester
 - + 1% spandex
- Black Denim:
- 67% cotton
 - + 29% polyester
 - + 3% rayon
 - + 1% spandex

- comfortable
- stretch
- durable

INFO

- fit: straight
size: S-XXL
- size M:
- weight: 535 g
 - inseam: 81 cm

FEATURES

- hand pockets
- rear pockets
- gusset for freedom of movement
- ergonomic pre-shaped knees
- waistbelt loops
- fly opening
- YKK zipper
- waist drawstring adjustment

PURPOSE

- climbing
- bouldering
- multisport
- lifestyle



Dark blue denim
10036393RFX

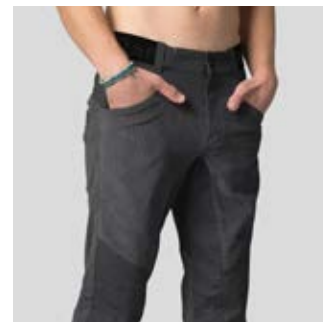
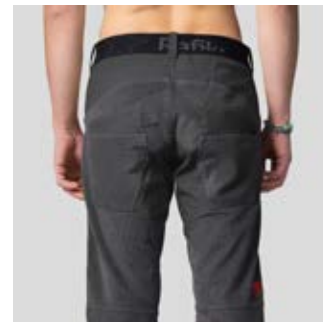
Black denim
10036394RFX





LEONIDIO, GREECE

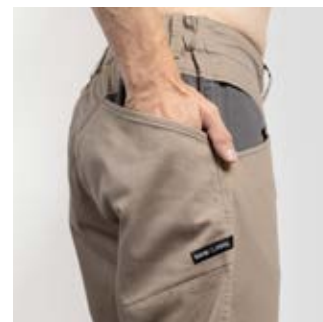
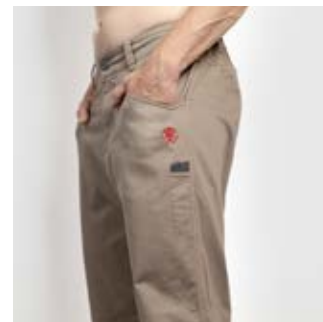
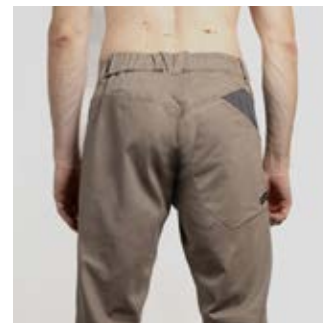
Whether you're hitting a climbing wall, going to work, or traveling to your next climbing challenge, you'll feel great in these stylish corduroy trousers. We've combined two different materials to make them - soft corduroy and a more durable material for stressed areas. Two large back pockets and two spacious top-entry front pockets make the Ledge trousers incredibly comfortable to wear. With pre-shaped knees and a sewn-in inner gusset at the crotch, they won't restrict any active movement. The waist has belt loops and there is a brush pocket on the side.





LOUČOVICE, CZECHIA

These stylish cotton climbing trousers with a more informal look will make every climber happy. The cotton material with twill weave and elastane ensures that the trousers will stand up to any climbing challenge. The trousers are tapered and elaborated. They have a climbing gusset in the crotch, partially elasticated waistband, pre-shaped knees, a brush pocket, belt loops and internal drawstrings. We've tested the Rockland trousers while climbing, but they're still waiting for a bouldering trip to the South African Rocklands, so will you be the first to take them there?



ROCKLAND

NEW

MEN'S PERFORMANCE CLIMBING PANTS

DESCRIPTION

- 98% cotton + 2% spandex
- durable
- stretch

INFO

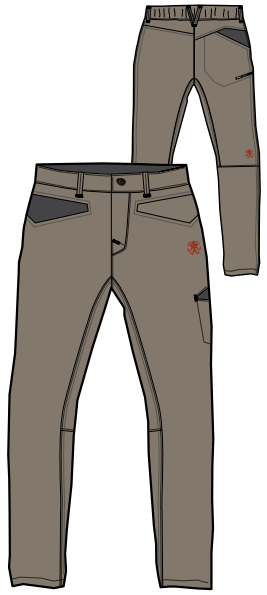
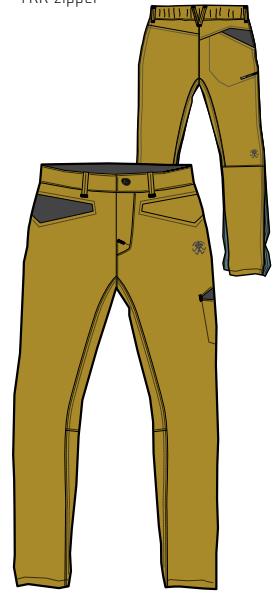
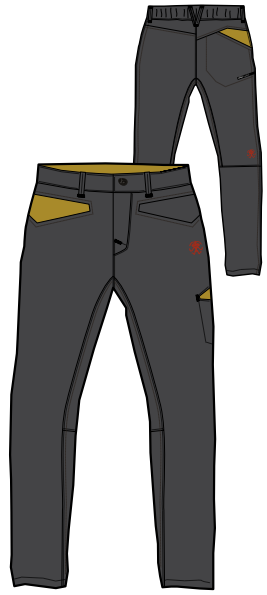
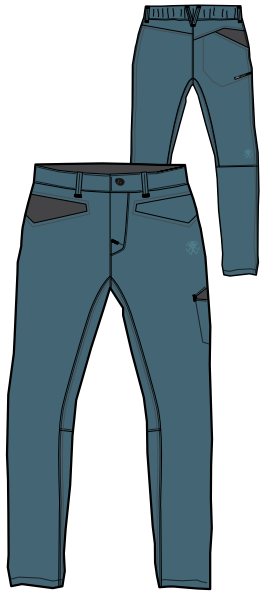
- fit: straight
size: S-XXL
- size M:
• weight: 610 g
• inseam: 82 cm

FEATURES

- adjustable partly elastic waistband
- 2 front pockets
- rear pocket
- gusset for freedom of movement
- ergonomic pre-shaped knees
- waistbelt loops
- toothbrush loops
- YKK zipper

PURPOSE

- climbing ██████████
- bouldering ██████████
- multisport ██████████
- lifestyle ██████████



Tapestry
10036397RFX

Asphalt
10036398RFX

Olive oil
10036399RFX

Brindle
10036400RFX





LOUČOVICE, CZECHIA

Stylish men's climbing sweatpants! You just need to have these in your wardrobe. We've narrowed the legs and finished them with cuffs so you can see every step, won't step on them, and can climb well in your climbing shoes. You can use the Badami both for outdoor bouldering and during evening sessions with friends. Remember, Rafiki sweatpants are not only for chilling out, but also for climbing! So don't just sit at home - you know what to do...



DURGA

MEN'S BASIC SWEAT PANTS



PRODUCT VIDEO
click or scan

DESCRIPTION

- 70% polyester
+ 26% cotton
+ 4% elastane
- breathable
- durable

INFO

- fit: straight
size: S-XXL
- size M:
• weight: 515 g
• inseam: 82 cm

FEATURES

- elastic waistband
- waist internal drawcord
- hand pockets
- patched rear pocket
- low leg rib cuffs

PURPOSE

- climbing
- bouldering
- multisport
- lifestyle



Raven
10025560RFX

Lizard
10025561RFX





RAFIKI ACCESSORIES

HAULER 50

NEW

DURABLE WEATHER-RESISTANT DUFFEL BAG

DESCRIPTION

Main:

- 100% polyester 420 D two tone ripstop (two side coated)

- durable
- water-resistant
- packable

INFO

size: 55x33x25 cm
weight: 650 g
capacity: 50 l

FEATURES

- durable fabric
- wide zipper lid opening with mesh pocket
- removable shoulder straps
- side zipper pocket
- front pocket with water-proof zipper
- 4 sturdy handles
- packable into its own pocket

PURPOSE

climbing

bouldering

multisport

lifestyle



Anthracite
10031669RFX

ROPER

ROPE BAG

DESCRIPTION

- Main:
- 100% polyester 600 D
- Tarp:
- 100% polyester 210 D coated

INFO

tarp size: 135x125 cm
weight: 590 g
capacity: 25 l

FEATURES

- 2 compression straps
- adjustable shoulder strap
- integrated rope tarp with colour loops
- hold ropes up to 80 m

PURPOSE

climbing



bouldering



multisport



lifestyle



Charcoal gray
118RF0355BP

SCOOP

CHALK BAG

DESCRIPTION

- Main:
- 97% cotton 3% elastane
- Lining:
- 100% polyester microfleece

INFO

size: UNI
weight: 100 g

FEATURES

- reinforce neck with drawstring closure
- 2 loops for belt fastening (belt included)
- brush loops
- microfleece lined interior

PURPOSE

climbing



bouldering



multisport



lifestyle



Persian red
(with Dark Navy)
10001938RFX

Dark navy
10029645RFX

Lemon curry
(with Dark Navy)
10001939RFX

Cabbage
(with Dark Navy)
10001941RFX

Heliotrope
(with Dark Navy)
10029644RFX

BISHOP

BOULDERING CHALK BAG

DESCRIPTION

- Main:
- 100% cotton
- Lining:
- 100% polyester microfleece

INFO

size: UNI
weight: 175 g

FEATURES

- stable design
- velcro roll-up closure with metal buckle
- side zippered storage pocket with ring/key holder
- 2 brush slots
- microfleece lined interior

PURPOSE

climbing

bouldering

multisport

lifestyle



Dark navy
(with red)
10004689RFX



El Paso
10029650RFX

**NEW
SEASON
NEW
OUTFIT**



#LESS TALK MORE CHALK

CHALK

MAGNESIUM

DESCRIPTION	INFO	FEATURES	PURPOSE
<ul style="list-style-type: none">• 100% chalk	„less talk more chalk..“	<ul style="list-style-type: none">• eco cosmetics products (not chemicals)• 100% healthy	climbing ██████████ bouldering ██████████ multisport ██████████ lifestyle ██████████



MG Ball 40 g
117RF0001AX01



MG Liquid 200 ml
117RF0002AX01



MG Liquid 100 ml
10005126RFX



MG Dose 100 g
117RF0003AX01



MG Sack 250 g
117RF0004AX01



SNĚŽNÍK, CZECHIA

CAMP

SNAPBACK

DESCRIPTION

- 73% cotton
- + 27% polyester
- 100% polyester

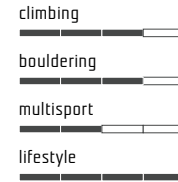
INFO

size: UNI
weight: 98 g

FEATURES

- adjustable plastic snap back closure
- internal sweatband
- one size fits most

PURPOSE



Golden olive
10024457RFX

Anthracite
10024458RFX

Gray violet
10024459RFX

BOW FLAG

A CLASSIC ADVERTISING FLAG AVAILABLE IN SIZE "S" OR "L" IT INCLUDES PRINTED TEXTILE, FLAGPOLE AND STAND FOR INDOOR AND OUTDOOR USE.

INFO

size:
"S": 55x200 cm
"L": 80x340 cm



BANNER

PVC BANNER WITH METAL MESH AROUND THE PERIMETER FOR MOUNTING.

INFO

size:
300x100 cm



LOGO STAND

POS-CARDBOARD DISPLAY STAND, TWO-SIDE PRINT,
SUITABLE EVEN FOR SUSPENSIONS IN, E.G. SHOP WINDOWS.

INFO

size:
35 cm – circle diameter



CUBE

IMAGE PAPER CUBE, TWO SIDES WITH LOGO PRINT,
THREE SIDES WITH IMAGE PHOTO PRINT.

INFO

size:
30x30 cm





CHULILLA, SPAIN

RAFIKI TEAM

Our ambassadors include experienced climbers as well as interesting personalities and promising aces. Thanks to a diverse cooperation with the climbing community, we constantly collection their impulses that we project into our future work and collections.

#RAFIKICLIMBING





The most prominent members of the team are:
Vojta Trojan, a tireless rock climber and racer,
Štěpán Stráník, who is constantly trying and inventing new difficult projects in the Moravian Karst,
Kuba Konečný, a successful competitor who has rope climbed routes up to 9a+,
Edita Vopatová, a leading Czech rock climber,
Rob Denayer one of the best Belgian boulderer or Spanish 8c climber
Núria Díaz and many others excellent climbers.

#RAFIKITEAM

RAFIKI EVENTS



For a long time, we have been supporting exciting and often unique climbing events such as the Rafiki Water Boulder Games, the Rafiki Urban Boulder Race and other climbing competitions and festivals.

We are very happy about the success of the Czech Mountaineering Association's climbing team that we have been supporting for years.

#RAFIKICLIMBING





SMÍCHOFF



RAFIKI THE WORLD IS WIDE

You can bump into Rafiki while sipping coffee in the winding streets of Arco in Italy, when endlessly practising in the shady forests of Frankenjura in Germany, while improving your personal best in sunny Kalymnos, or when spending the winter climbing in far-away Spain.

#RAFIKICLIMBING



rafikiclimbing
apparel for climber

RAFIKI MEDIA



#rafikiclimbing



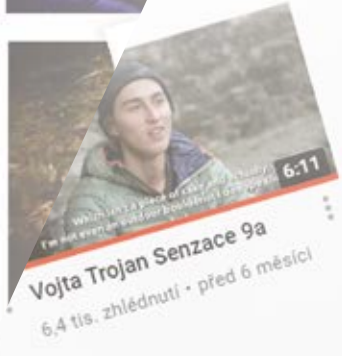
www.facebook.com/rafiki.climbinglife



www.rafikiclimbing.com



Rafiki Climbing





GO SUSTAINABLE



REDUCE



RECYCLE



REUSE



RETHINK

All Rafiki materials are chosen with full respect for the environment.
In order to reduce the amount of used plastics, we also reduce the size of packaging.
All Rafiki products are packed into recycled plastic bags.



The Global Organic Textile Standard (GOTS)

.. the strictest certification for textiles made of organic textile fibers.



organic cotton

.. is produced and certified according to organic farming standards.



Lenzing Modal

.. fibers are certified as biodegradable and compostable.



viscose yarn

.. is an artificial cellulose fiber made from dissolved wood pulp from trees.



.. is insulation that provides long-lasting shape and warmth for any climate. It's partially plant based which reduces its impact on the environment.



.. is a superior substitute for spandex, it keeps its original shape longer and is wrinkle resistant. It's partially plant based which reduces its impact on the environment.



.. is an independent, global standard for down feathers that places great emphasis on animal welfare.



.. is trusted worldwide zipper producer with impeccable production standards and quality control processes.

HOW TO MEASURE

MEN

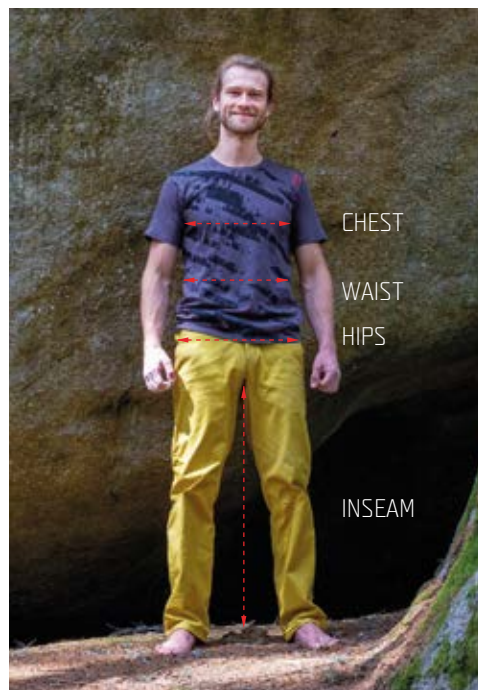
CHEST / Place the tape measure under the arms and around the fullest part of your chest with arms raised slightly.

WAIST / Measure all the way around your body, level with your belly button. Make sure it's not too tight and that it's straight, even at the back. Don't hold your breath while measuring.

HIPS / Put your feet together. Locate the correct area of your hips and measure the widest point around your buttocks. Hold the start of the tape measure on one hip, wrap it around your buttocks and around your other hip and then back to where you started.

INSEAM / Grab your favorite pair of pants. Measure the inseam starting at the crotch seam to the bottom of the pant leg.

SLEEVE LENGTH / Measure with your hands on your hips, from the neck edge, across your shoulder and down the outside of your arm to the wrist bone.



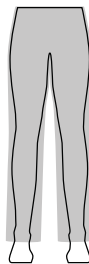
SLIM / FITTED
Fits close to the body
and form fitting.



STRAIGHT
Straight cut
through the body



RELAXED
Roomy and comfortable.
Drapes loosely on the body



WOMEN

HOW TO MEASURE

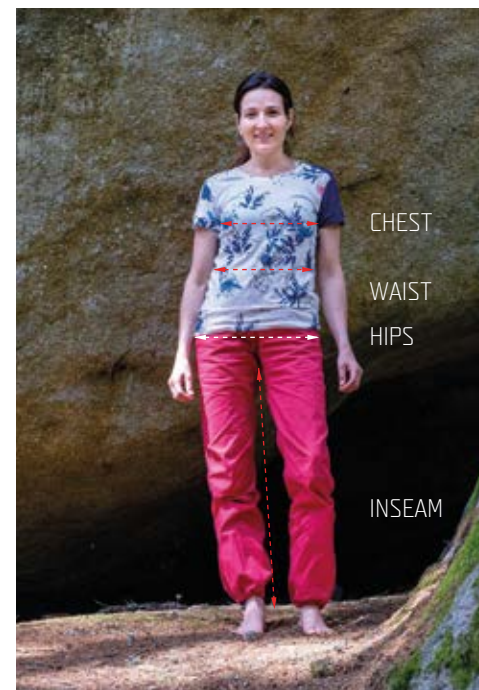
BUST / Place the tape measure under the arms and around the fullest part of your bust with arms raised slightly.

WAIST / Measure all the way around your body, level with your belly button. Make sure it's not too tight and that it's straight, even at the back. Don't hold your breath while measuring.

HIPS / Put your feet together. Locate the correct area of your hips and measure the widest point around your buttocks. Hold the start of the tape measure on one hip, wrap it around your buttocks and around your other hip and then back to where you started.

INSEAM / Grab your favorite pair of pants. Measure the inseam starting at the crotch seam to the bottom of the pant leg.

SLEEVE LENGTH / Measure with your hands on your hips, from the neck edge, across your shoulder and down the outside of your arm to the wrist bone.



MAN	XS	S	M	LX	L	XXL
	44	46	48	50	52	54
CHEST	86-93	94-98	99-103	104-108	109-113	114-118
WAIST	73-77	78-82	83-87	88-92	93-97	98-102
HIPS	87-91	92-96	97-101	102-106	107-111	112-116
INSEAM	82-84	83-85	84-86	87-89	89-91	90-92

WOMAN	32	34	36	38	40	42	44
	XXS	XS	S	M	L	XL	XXL
CHEST	77-80	81-84	85-88	89-92	93-96	97-100	100-103
WAIST	59-62	63-66	67-70	71-74	75-78	79-82	83-86
HIPS	85-88	89-92	93-96	97-101	102-105	106-109	110-113
INSEAM	76-79	78-81	80-83	82-85	84-87	86-89	88-90

KID	128	140	152
	6-7y	8-9y	10-11y
CHEST	64	69	74
WAIST	58	63	68
HIPS	70	75	80
INSEAM	56	64	73

The measurements are in **centimetres**.

The measurements are only indicative, not dimensions of the garment
(except for inseam, which is garment measurement)
We recommend to try out our clothes personally.

Rafiki reserves the right to perform changes in the products presented in this workbook. Any part of this presentation cannot be reproduced without permission of Rafiki.

Photographers: Jan Novák, Jakub Cejpek, Adam Mašík, David Hájek, Jakub Konečný, Lukáš Klingora, Pavel Nesvadba, Jan Haráč, Petra Šebestová,
Karolína Oliveriusová, Lukáš Bíba and Rafiki Urban Boulder Race photo archive, Outdoor Concept, a. s. archive.



#RAFIKICLIMBING

 www.rafikiclimbing.com

 [Rafiki-climbing life](https://www.facebook.com/Rafiki-climbing-life)

 [rafikiclimbing](https://www.instagram.com/rafikiclimbing)

 [Rafiki Climbing](https://www.youtube.com/RafikiClimbing)

Americá 54 | 301 00 Plzeň | Czech Republic | tel.: + 420 379 200 666 | office@rafiki.cz